



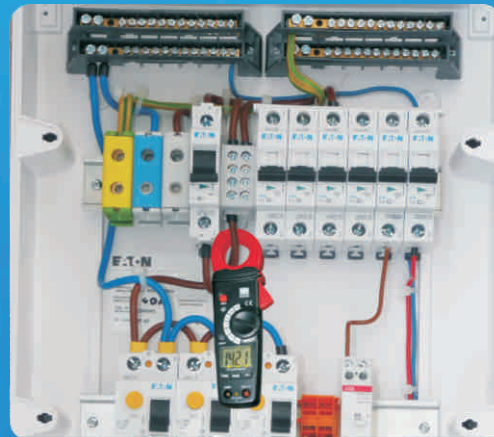
EMPOWERING  
MEASUREMENT



# ADDED TEMPERATURE MEASUREMENT WITH AFFORDABILITY



- Average,  $3\frac{1}{2}$  digit ( 2000 counts )
- Auto/Manual ranging mode
- 600V AC/DC & Up to 400A AC
- Temperature measurement
- 23mm clamp jaw size
- Low Overload indication 'OL'
- Data Hold / Max Hold / Backlight



# TECHNICAL SPECIFICATION

## AC Current (through clamp)

Range	Resolution	Accuracy (% of reading)
2.000 A	0.001A	± (2.5% + 10 digits)
20.00 A	0.01A	± (2.5% + 4 digits)
200.0 A	0.1A	
400 A	1A	± (3% + 4 digits)

## DC-Voltage

Range	Resolution	Accuracy (% of reading)	Input Impedance
200.0 mV	0.1mV	± (0.8% + 5 digits)	7.8MΩ
2.000 V	0.001V	± (1.2% + 3 digits)	
20.00 V	0.01V		
200.0 V	0.1V		
600 V	1V	± (1.5% + 3 digits)	

## AC Voltage

Range	Resolution	Accuracy (% of reading)	Input Impedance
200.0 mV	0.1mV	± (1.5% + 30 digits)	7.8MΩ
2.000 V	0.001V	± (1.5% + 3 digits)	
20.00 V	0.01V		
200.0 V	0.1V		
600 V	1V	± (2% + 4 digits)	

Note : No Auto ranging at 200mV AC voltage range

## Resistance

Range	Resolution	Accuracy (% of reading)
200.0Ω	0.1Ω	± (1.0% + 4 digits)
2.000KΩ	0.001Ω	± (1.5% + 2 digits)
20.00KΩ	10Ω	
200.0KΩ	100Ω	
2.000MΩ	1KΩ	± (2.0% + 3 digits)
20.00MΩ	10KΩ	± (3.0% + 5 digits)
Temperature (Type K)	-20°C to 1000°C	± (3% + 5°C )
	-4°F to 1832°F	± (3% + 8°F )

Display:	: LCD
Diode Test	: Test current of 0.3mA typical; Open circuit voltage 1.5V DC typical
Continuity Check	: Threshold <120Ω; Test current < 1mA
Sampling Rate	: 2 per second, nominal
Low Battery Indication	: "BAT" is displayed
Operating Temperature	: -10°C to 50°C
Relative Humidity	: 90% (0°C to 30°C), 75% (30°C to 40°C), 45% (40°C to 50°C)
Battery	: Two 1.5V 'AAA' batteries
Safety	: CE, EN 61010-1, CAT III 600V
Auto power off	: approx. 15 mins at Temperature range
AC Current bandwidth	: 50/60Hz
AC Voltage bandwidth	: 50/400Hz
Dimensions/Weight	: 201x69x35mm/200g approx.
Standard Accessories	: Test leads, Calibration certificate, Instruction manual, Carrying case, Bead K type thermocouple



## Notes

1. The Instrument is accompanied with Test & calibration sheet. 2. Test Facilities can be provided at the factory with the available test set-ups only. 3. The Company's policy is continuous improvement of its products. We therefore reserve the Right of any deviation from illustration or specifications without notice.



Designed and Manufactured by:

**The Motwane Manufacturing Company Pvt. Ltd.**

Gyan Baug, Motwane Road, Nashik, Maharashtra, India.

Tel. No.: +91-253-2463752 / 53 Fax.: +91-253-2463197

Toll Free: 1800 - 233 - 7766

e-mail: sales@motwane.com visit : www.motwane.com

Follow Us On :    